

High-Dosage Tutoring

Getting Started Guide

Your All-in-One Resource for Administrators, Teachers, Students, and Parents



For Teachers and Administrators

About High-Dosage Tutoring

High-Dosage Tutoring vs. On-Demand Tutoring

High-Dosage Tutoring	On-Demand Tutoring
Consistent access to educators from the Princeton Review	Variable access to educators
Intensive, 3+ times/week	As-needed
Fixed session lengths of 30-45 minutes	Variable session lengths, typically about 20-30 minutes each
Pre-scheduled during the school day	24/7, on-demand
Targeted support to address learning goals for students who have not met	Individualized support to help students show new knowledge/skills
Small groups (3-6 students)	1-on-1 sessions
Stable, with a consistent tutor	Varies tutors
Subject focused in Math and ELA	Available in 25+ subjects
Assessment-driven, with performance monitoring in the Tutor.com Success Manager	Teacher-led, with transcripts available in the teacher dashboard
Personalized Learning Plans, along with Learning Reports after each session	Personalized Learning Plans, along with Learning Reports after each session
Ideal for students who may not seek help on their own	Ideal for students who may seek help on their own
Significant, measurable academic improvement in large groups	Incremental, measurable improvement in confidence, engagement, completion, and grades

Questions? Email K12team@tutor.com to learn more.

tutor.com vs. Other Providers

Feature	tutor.com	Other Providers
Program Longevity	Established program for 10+ years with a proven track record of success	Research-based programs with limited track record
Research	Extensive research conducted with leading universities and research centers	Research-based programs with limited track record
Curriculum	Highly targeted curriculum aligned with state standards and aligned with the most effective learning practices	Research-based programs with limited track record
Cost and Impact	Cost-effective learning program that has been shown to have the greatest impact on student learning	Research-based programs with limited track record
Assessment	Personalized Learning Plans and Learning Reports provide detailed insights into student performance and learning progress	Research-based programs with limited track record
Support	24/7 support for students and educators, along with a dedicated support team	Research-based programs with limited track record
Staff and Quality	Highly trained and vetted tutors, along with a dedicated support team	Research-based programs with limited track record
Scalability	Proven program that can be scaled to meet the needs of any school or district	Research-based programs with limited track record
Access and Usability	Available on any device, with a user-friendly interface	Research-based programs with limited track record
Reporting	Detailed reporting and analytics to track student progress and learning outcomes	Research-based programs with limited track record
Integration	Seamless integration with existing school systems and data	Research-based programs with limited track record
Support	24/7 support for students and educators, along with a dedicated support team	Research-based programs with limited track record
Scalability	Proven program that can be scaled to meet the needs of any school or district	Research-based programs with limited track record
Access and Usability	Available on any device, with a user-friendly interface	Research-based programs with limited track record
Reporting	Detailed reporting and analytics to track student progress and learning outcomes	Research-based programs with limited track record
Integration	Seamless integration with existing school systems and data	Research-based programs with limited track record

FAQ for Administrators: High-Dosage Tutoring

How does High-Dosage Tutoring help address learning gaps?

High-Dosage Tutoring provides consistent, frequent, and intensive support to help students overcome learning gaps and achieve academic success. A 2022 meta-analysis conducted by the American Institutes for Research found that "intensive" tutoring was effective for a wide variety of K-12 students by approximately 1.5 to 2 months.

How do students work with the same tutor every session?

Yes, students will be working with the same tutor for every session. Once the check-in is established, a tutor's role is to work with their assigned group of students at the appointed time. These sessions typically occur as soon as possible after the initial check-in.

Are students safe?

Yes, tutor.com complies with all applicable safety and security regulations. Tutors are rigorously vetted, and our real-time support team ensures the safety and security of all students. Additionally, tutors do not receive any personal information about students, including their names and photos.

How can administrators use their campus resources for this model?

To ensure a smooth adoption and implementation of a high-dosage tutoring program, we encourage administrators to:

1. Identify a subject matter expert.
2. Verify their availability.
3. The program will not change behavior and will be implemented in a way that does not disrupt existing programs.
4. Provide a subject matter expert and assemble a strong support team for the program. The school's learning coordinator and/or the Tutor.com Customer Success team.
5. Consider staff working in other roles to help with and share their role in the program's implementation.

Will administrators have access to data?

Yes, the Administrator Dashboard will be able to monitor data and report.

How long and how often are the sessions?

Sessions last 30-45 minutes and are scheduled throughout a semester or school year, about 3 times a week at a minimum. Each session lasts 30-45 minutes.

For more information, reach out to your Tutor.com Customer Success Manager at clientsupport@tutor.com.

FAQ for Educators: High-Dosage Tutoring

How does High-Dosage Tutoring help address learning gaps?

High-Dosage Tutoring provides consistent, frequent, and intensive support to help students overcome learning gaps and achieve academic success. A 2022 meta-analysis conducted by the American Institutes for Research found that "intensive" tutoring was effective for a wide variety of K-12 students by approximately 1.5 to 2 months.

How do students work with the same tutor every session?

Yes, students will be working with the same tutor for every session. Once the check-in is established, a tutor's role is to work with their assigned group of students at the appointed time. These sessions typically occur as soon as possible after the initial check-in.

Are students safe?

Yes, tutor.com complies with all applicable safety and security regulations. Tutors are rigorously vetted, and our real-time support team ensures the safety and security of all students. Additionally, tutors do not receive any personal information about students, including their names and photos.

How can educators use their campus resources for this model?

To ensure a smooth adoption and implementation of a high-dosage tutoring program, we encourage educators to:

1. Identify a subject matter expert.
2. Verify their availability.
3. The program will not change behavior and will be implemented in a way that does not disrupt existing programs.
4. Provide a subject matter expert and assemble a strong support team for the program. The school's learning coordinator and/or the Tutor.com Customer Success team.
5. Consider staff working in other roles to help with and share their role in the program's implementation.

Will educators have access to data from tutoring sessions?

Yes, the Educator Dashboard will be able to monitor data and report.

How will the educator know what is happening during a tutoring session?

After each session, tutors receive information on how well each session went, including student engagement and any other observations they would like to share with the teacher.

Are sessions safe?

Yes, tutor.com complies with all applicable safety and security regulations. Tutors are rigorously vetted, and our real-time support team ensures the safety and security of all students. Additionally, tutors do not receive any personal information about students, including their names and photos.

For more information, reach out to your Tutor.com Customer Success Manager at clientsupport@tutor.com.

High-Dosage Tutoring vs. On-Demand Tutoring

Differences between Tier 2 and Tier 1 interventions

Tutor.com vs. Other Providers

Comparison of High-Dosage Tutoring offerings

FAQ for Administrators

Answers to questions about program design

FAQ for Teachers

Answers to questions about tutorials

Program Launch

High-Dosage Tutoring Preparing for Launch

Getting the most out of your High-Dosage Tutoring is almost as important as the program itself. To encourage management, we have provided a range of resources to support your communication efforts. Our Customer Success Manager will also collaborate with you in developing a communication plan that aligns with your specific needs.

Learn how to create a supportive classroom environment that maximizes the effectiveness of High-Dosage Tutoring for your students.

Follow these key steps before launch day to ensure a seamless implementation of High-Dosage Tutoring in your classroom.

Schedule a "dry run" with students prior to launch day to test out the access and technology and get expectations for students participating in tutoring. Students should watch instructional video for students.

Best Practices Flyer

Top 5 Tips to Go Before Launch Day

Learning Environment Video

For more information, reach out to your Tutor.com Customer Success Manager at clientsupport@tutor.com.

Top 5 Classroom Tasks: One Week Before Launch

Launching a new initiative in the classroom requires careful preparation to ensure a seamless experience for students and staff. Here are the top 5 tasks to complete one week before launch day to ensure a successful program launch.

1. Schedule a Dry Run: Organize a practice session with your high-dosage tutoring students. This will help them get comfortable with the process and feedback before any official sessions start.
2. Prepare the Environment: Ensure students enter the classroom and settle into the designated seat you've chosen for them.
3. Log In to Tutor.com: Guide students to the high-dosage tutoring tab and ensure they know where to find their sessions.
4. Watch the "Introducing High-Dosage Tutoring" and "Ensuring Student Success" Videos: View the videos below, also available via the Tutor.com account and/or email from your Customer Success Manager. These resources ensure students are comfortable in their high-dosage tutoring sessions and staff are prepared to support them.
5. Set Behavioral Norms for Tutoring Sessions: Launching a program for the first time during high-dosage tutoring sessions can help students learn the appropriate behavior. Establishing clear expectations and behavioral norms from the start is essential. All participating high-dosage tutoring sessions and all participating high-dosage tutoring sessions are required and reported by teachers, administrators, and Tutor.com staff.

For more information, reach out to your Tutor.com Customer Success Manager at clientsupport@tutor.com.

Teacher Tips for Supporting High-Dosage Tutoring in the Classroom

Since High-Dosage Tutoring happens during the school day, teachers are essential advocates for students participating in small-group, high-impact tutoring. Follow the tips below to create a supportive classroom environment that maximizes the effectiveness of High-Dosage Tutoring for your students.

1. Active Monitoring: Actively monitor students to ensure students stay focused and engaged for the entire duration of the tutoring session.
2. Minimize Distractions: Position students centrally in the classroom, allowing them to concentrate fully on their tutor and their work. Reduce distractions during tutoring sessions to maintain a positive learning environment, including students to avoid conversations with peers, friends, or other students outside of tutoring time.
3. Maximize Tutoring Time: Encourage students to get the most out of their sessions by implementing procedures to make certain students use feedback with "micro-phones" and "micro-boards" and encourage them to take notes before tutoring begins. Encourage students to hold conversations with their tutors, friends, or other students outside of tutoring time.
4. Tech Issue Reporting: Report any technological issues promptly using a support ticket through your Tutor.com account.
5. Plan Ahead: Notify your school's tutoring contact at least two school days before any missed tutoring sessions or a "bad" tutoring day.

For more information, contact Tutor.com by emailing clientsupport@tutor.com.

High-Dosage Tutoring Best Practices

The High-Dosage Tutoring Learning Environment For Teachers

Learning Environment Setup

Teacher video instructions for creating productive spaces

Preparing to Launch

Promoting student success from Day 1

Pre-Launch Tasks

Countdown checklist for a successful start

Teacher Tips

5 school-day tutoring strategies for educators

High-Dosage Tutoring Best Practices

Ensuring Student Success for Teachers

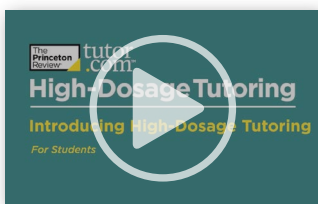
Flip over for students and parents

High-Dosage Tutoring Getting Started Guide

Your All-in-One Resource for Administrators,
Teachers, Students, and Parents

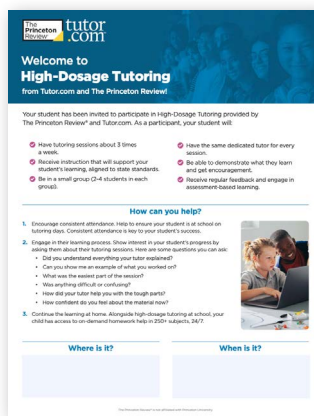


For Students and Parents



Introduction for Students

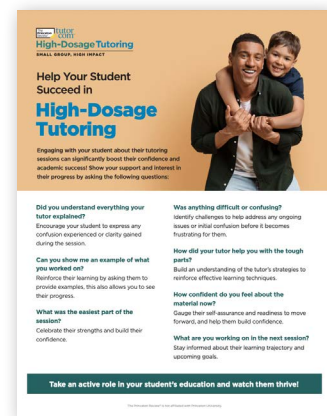
Student video featuring
High-Dosage Tutoring
program information



Parent Information

Haga clic aquí para español

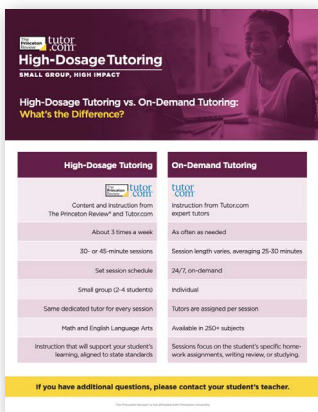
About the High-Dosage
Tutoring learning experience



Parent Engagement Resource

Haga clic aquí para español

Questions parents can ask
students about tutorials



Difference Between High-Dosage Tutoring and On-Demand Tutoring

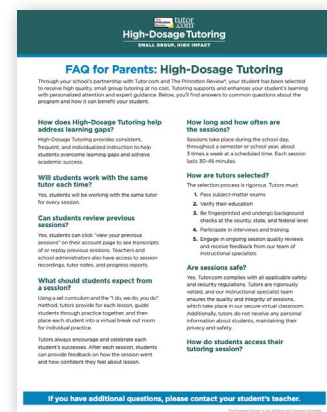
Haga clic aquí para español

Facts for parents about two
types of student support



Understanding the Difference Between High-Dosage and On-Demand Tutoring

Parent video about the
features of each program



FAQ for Parents

Haga clic aquí para español

Answers to questions about
the student experience

